

2009-2010 EDITION

Epiphany Sages Newsletter
January, 2010

Mission Statement

Epiphany Sages is a ministry for senior members dedicated to support one another and the community through spiritual, social, and service activities

Core Team

George Hagman, President (11)
Marge McGrath, Vice-President (10)
Carl Trimble, Treasurer (11)
Mary Ann Calle', Secretary (11)
Dot Zipperle (12)
M. E. White (12)
Freda Adiletto (12)
Nancy Quarles (10)
Wilma Valentine (10)

Committee Chairs

Hospitality: Dot Zipperle
Membership: Marge McGrath
Newsletter: Joe Uveges
Prayer Chair: Corine Liebert
Program: Mil Buckley
Social: Suzanne Mosley/George Hagman
Spiritual: (vacant)
Sunshine: Herman & Doris Heslen
Swinging Sages: Norm Buckley
Telephone: Doris Spooner/Corine Liebert
Service/Volunteer: (vacant)

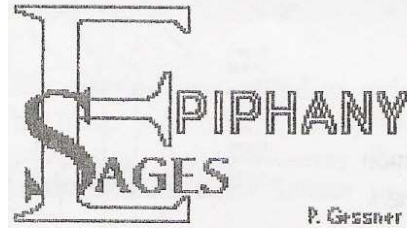
Core Team Meetings

The Wednesday before the General Membership meeting at 12 Noon in the library of the Community Center. Any member is welcome to attend.

General Membership Meetings

All General Membership Meetings will be on the 3rd Sunday of the Month after the 11:30am liturgy in the Community Center

No meetings in June (Father's Day), July (Sages Annual Picnic) and December (Sages Annual Christmas Party)



WHAT'S AHEAD

Wednesday, January 13, 2010

Core Team Meeting

12 Noon in the Community Center
(open to any interested members)

Sunday, January 17, 2010

General Membership Meeting
After the 11:30am Mass

Karen Wyatt

Buckner YMCA

"Diet, Exercise, and Balance"

Wednesday, January 27, 2010

Sages Day Trip to the Horseshoe
9:00am - 4:00pm

Cost: \$10.00 per person

Includes transportation, lunch, and
casino cash

(More Information Below)

Thursday, February 18, 2010

"Blessing Designer Workshop"

10:30am til ?????

(More information below)

Core Team Minutes: Dec. 16, 2009

Nancy Quarles convened the meeting at 10:45am. Those present: Nancy Quarles, Carl Trimble, Marge McGrath, George Hagman, Corine Liebert, Mil/Norm Buckley, Suzanne Mosley, Mary Ann Calle', Dot Zipperle, Wilma Valentine, M.E. White, Sr. Mary Govern.

The meeting began with an opening prayer by Wilma Valentine.

The September Minutes were approved (Mil Buckley/Carl Trimble).

Treasurer Carl Trimble: the Sages budget for 2009-2010 is \$1410.00. Nov-Dec income was \$71.00 (member donations) with expenses of \$704.34. Income (YTD) is \$285.00 and expenses (YTD) of \$893.03. The balance of available funds is \$801.97.

Parish Support. Sr. Mary announced that Gary Marvin will talk to Core Team members about computer skills at the January 13, 2010 meeting. Learning computer skills remains an important goal for seniors.

Committee Reports:

Hospitality: Dot Zipperle reported that she had enough food for the January 17th membership meeting.

Membership: The Sages Directory has been updated. There will be more discussion about its content and use at the January 13th Core Team meeting. Both content and distribution will be of interest.

Newsletter: Joe Uveges has volunteered to continue to edit the Newsletter.

Prayer Chain: NR. *An invitation remains for someone to*

volunteer to replace Corine NOW!!!
Come on, folks, this is so important - call George Hagman (425.3126) NOW!!!!

Program: Mil Buckley announced that our **January speaker** will be **Karen Wyatt, from the Buckner YMCA** who will tell us about the why's and how's of "**Diet, Exercise, and Balance.**" Plans for the February meeting are still open.

Social Activities: Suzanne Mosley & George Hagman. There is a need for a "Help" committee to assist in developing "social" plans for 2010. A meeting was held on December 18th with Suzanne for this purpose. The planned trip to Memphis-Tunica (April 19-23, 2010) still has openings. Please ask others to join us (***more information is found below***). George has put together a day-trip to the Horseshoe Casino for Wednesday, January 27th (***more information is found below***). And, way far ahead in June the Sages Annual Bus Trip will take us to Mackinac Island in Michigan.

Spiritual: **the committee is seeking a new leader.** Any Sage member is eligible to serve. **Call George Hagman (425.3126) to volunteer.**

Sunshine: NR.

Blessing Designer Workshop

Be part of a special group of women who have crafted over 250 blessings to be sent to Sages members. **JOIN US - Thursday, February 18th at 10:30am at Jan Woodall's (503 Coachhouse Ct. - 244.9195)** to learn, share, laugh, and re-design greeting cards. Bring your own bag lunch.

Swinging Sages: Nothing planned during the Holiday Season.

Telephone: All okay.

Volunteer Services: **the committee is seeking a new leader.**

Any Sage member is eligible to serve. **Call George Hagman (425.3126) to volunteer.**

Old Business: A “big” thank-you to all those who have served during 2009.

New Business: Elections for the 2010 Sages Core Team Officers were held. The results:

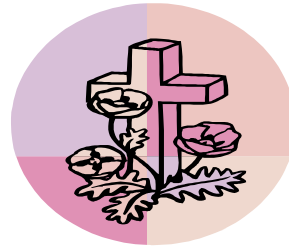
President: George Hagman
Vice-President: Marge McGrath
Treasurer: Carl Trimble
Secretary: Mary Ann Calle’

Congratulations and “bon voyage”

Motion to Adjourn: (Mil Buckley and Freda Adiletto)

SAGES GO TO THE HORSESHOE

The Sages will visit the Horseshoe Casino on Wednesday, January 27, 2010. The Mattingly Travel & Tours bus will depart the Epiphany Parking Lot at 9:00am. The bus will depart the Casino at 2:45pm. The cost is \$10.00 per person which covers transportation, lunch, and a \$5.00 casino voucher. Your check should be made payable to “Church of the Epiphany” and mailed to George Hagman, 709 Nottingham Parkway, Louisville, KY 40222. Send no later than January 15th.



In Memorium

*Phyllis Aizawa
Lula Nalley
Evelyn Ulrich*

Happy Birthday Sages (January)

- 02: Barbara Mattingly
- 05: Arlon Podshadley
- 07: Bob Quarles
- 08: Peggy Cullen
- 13: Karen Hutcheson
- 14: Bob Pessolano
Lois Von Nostitz
- 15: LaVerne Mattick
Pat Holub
- 17: Gunter Sinsel
- 18: Jane Smith
- 21: Bob Burke
- 22: Randy Holub
- 23: Bobbe Moutray
- 24: George Ann Lamb
- 27: Jo Anne Feldman
David McLaughlin
- 28: Elizabeth Bergmann
- 30: Catherine Schultz
Ginna Willenbrink
- 31: Helen Fackler

Memphis/Tunica Bus Trip
April 19-23 (Mon.-Fri.)
5 days/4 nights
\$335/person, single occupancy
There are still some seats
available for this trip!

4 Breakfasts at Paula Dean's Buffet
Restaurant
4 Dinners at different restaurants
4 consecutive nights at a Casino Hotel in
Tunica

Guided Tour of Memphis includes:
Beal Street, St. Jude's Childrens Hospital,
Sun Recording Studio,
The Smithsonian Memphis Rock N' Soul
Museum, Peabody Hotel,
Platinum tour of Graceland, home of Elvis,
(includes his house, airplanes, car museum
and MORE).

**Final payment is due BEFORE February
8, 2010..**

**Those who have paid their deposit of
\$75,**

your final payment is \$260.

Checks payable to: *Diamond Tours*
Mail check to: Suzanne Mosley
605 Armadale Place
Louisville, KY 40243

ANNOUNCEMENT!!!
SAGES PICTURES

**Pictures from the Sages Boston trip are
now available on the Epiphany website!!!**
You may access them as follows:

(1) Open up the Epiphany Home Page:
<http://www.churchofepiphany.com/>

**(2) place your cursor over the word
"media" at the top of the page.**

**(3) Select photo album by "clicking" on
it. This brings up all of the Epiphany
photo albums.**

**(4) Click on the picture that says "Sages
Boston trip (June, 2009). This opens the
folder which has the pictures.**